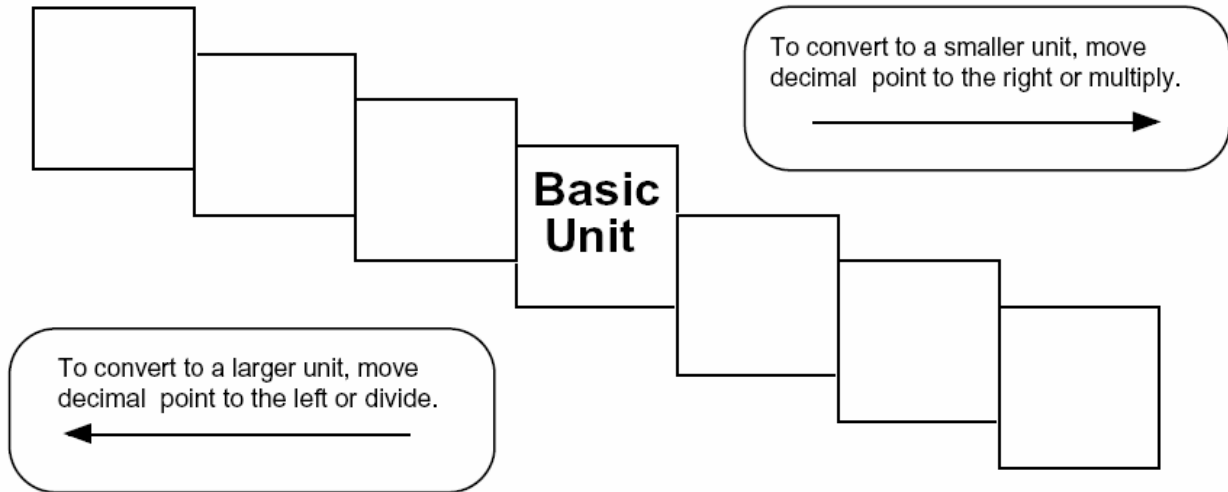


# Metric Mania

Name \_\_\_\_\_

## Metric Conversions

Fill in the boxes in the stair step diagram.



Try these conversions, using the ladder method.

$1000 \text{ mg} = \underline{\hspace{2cm}} \text{ g}$

$1 \text{ L} = \underline{\hspace{2cm}} \text{ mL}$

$160 \text{ cm} = \underline{\hspace{2cm}} \text{ mm}$

$14 \text{ km} = \underline{\hspace{2cm}} \text{ m}$

$109 \text{ g} = \underline{\hspace{2cm}} \text{ kg}$

$250 \text{ m} = \underline{\hspace{2cm}} \text{ km}$

Compare using  $<$ ,  $>$ , or  $=$ .

$56 \text{ cm} \bigcirc 6 \text{ m}$

$7 \text{ g} \bigcirc 698 \text{ mg}$

# Metric Mania

Name \_\_\_\_\_

## Metric Conversions

Write the correct abbreviation for each metric unit.

1) Kilogram \_\_\_\_\_

4) Milliliter \_\_\_\_\_

7) Kilometer \_\_\_\_\_

2) Meter \_\_\_\_\_

5) Millimeter \_\_\_\_\_

8) Centimeter \_\_\_\_\_

3) Gram \_\_\_\_\_

6) Liter \_\_\_\_\_

9) Milligram \_\_\_\_\_

Try these conversions, using the ladder method.

10) 2000 mg = \_\_\_\_\_ g

15) 5 L = \_\_\_\_\_ mL

20) 16 cm = \_\_\_\_\_ mm

11) 104 km = \_\_\_\_\_ m

16) 198 g = \_\_\_\_\_ kg

21) 2500 m = \_\_\_\_\_ km

12) 480 cm = \_\_\_\_\_ m

17) 75 mL = \_\_\_\_\_ L

22) 65 g = \_\_\_\_\_ mg

13) 5.6 kg = \_\_\_\_\_ g

18) 50 cm = \_\_\_\_\_ m

23) 6.3 cm = \_\_\_\_\_ mm

14) 8 mm = \_\_\_\_\_ cm

19) 5.6 m = \_\_\_\_\_ cm

24) 120 mg = \_\_\_\_\_ g

Compare using <, >, or =.

25) 63 cm ○ 6 m

27) 5 g ○ 508 mg

29) 1,500 mL ○ 1.5 L

26) 536 cm ○ 53.6 dm

28) 43 mg ○ 5 g

30) 3.6 m ○ 36 cm

